



Rabbit anti Amylin Peptide Polyclonal Antibody

Alternative Name(s): Amylin peptide

Order Information

- **Description:** Amylin Peptide
- **Catalogue:** 500-3404
- **Lot:** See label
- **Size:** 100ug/200ul
- **Host:** Rabbit
- **Clone:** nan
- **Application:** IHC(P), ELISA
- **Reactivity:** Hu

ANTIGEN PREPARATION

A synthetic peptide derived from N-term of human Amylin peptide.

BACKGROUND

Amylin is a 37 amino acid peptide co-secreted with insulin from pancreatic islet beta-cells. Amylin shares structural similarities with calcitonin gene-related peptide (CGRP) and calcitonin (CT), including an N-terminal ring structure linked by a disulfide bridge, and an amidated C-terminus. The function of Amylin is to maintain the glucose homeostasis, include lowered insulin secretion, raised hepatic glucose output, stimulation of glycogenolysis and inhibition of glycogen synthesis in liver cells and in skeletal muscle. Amylin peptide is predominantly found in the beta cells of the pancreas and to a lesser extent in the gastrointestinal tract and nervous system. This antibody can be used for staining of amylin in normal and diabetic pancreas and pancreatic carcinoma

PURIFICATION

The Rabbit IgG is purified by Epitope Affinity Purification

FORMULATION

This affinity purified antibody is supplied in sterile Phosphatebuffered saline (pH7.2) containing antibody stabilizer

SPECIFICITY

This antibody recognizes ~10 kDa of human Amylin protein. The other species are not tested.

STORAGE

The antibodies are stable for 24 months from date of receipt when stored at -20oC to -70oC. The antibodies can be stored at 2oC-8oC for three month without detectable loss of activity. Avoid repeated freezing-thawing cycles.

APPLICATIONS/SUGGESTED WORKING DILUTIONS*

- Western Blot: 0.1-1 µg/ml
- ELISA: 0.01-0.1 µg/ml
- Immunoprecipitation: 2-5 µg/ml
- IHC: 2-10 µg/ml
- Flow cytometry: Not tested
- Molecular Weight: 10.0
- Positive Control: Kidney Tissue
- Cellular Location: Cell Membrane

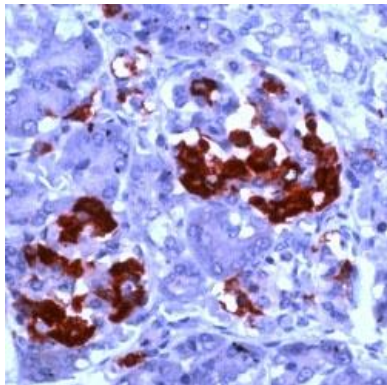
*Optimal dilutions should be determined by researchers for the specific applications.

FOR RESEARCH USE ONLY.

AbboMax, Inc 2528 Qume Drive, Suite 8, San Jose, California 95131, USA
1 408-573-1898 (Tel). 1 408-573-1858 (Fax). www.abbomax.com info@abbomax.com



DATA ATTACHMENTS



Immunohistochemistry: Human pancreatic tissue (FFPE) stained with Anti-Amylin antibody, (Cat# 500-3404) at 1:100 for 10 min @ RT. Staining of formalin-fixed tissue requires boiling tissue sections in 10 mM Citrate Buffer, pH 6.0 for 10 min followed by cooling at RT for 20 min.

REFERENCES

FOR RESEARCH USE ONLY.

AbboMax, Inc 2528 Qume Drive, Suite 8, San Jose, California 95131, USA
1 408-573-1898 (Tel). 1 408-573-1858 (Fax). www.abbomax.com info@abbomax.com